

# 215mm Four Drawer Unit for 33mm Bottles

Construction Instructions

[www.ebmahobby.co.uk](http://www.ebmahobby.co.uk)



## Introduction

The EBMA Modular Storage Units are produced in a combination of 3mm and 6mm MDF. As such normal DIY woodwork procedures can be applied to them. The parts are cut by a laser cutter which results in smoke marks on the surface of the wood. One side of the wood will have slight marks and the other will be more pronounced. Some parts are symmetrical and you are therefore able to choose the visual effect you wish. For asymmetrical parts if you wish to remove the smoke marks then fine sandpaper may be used (use a sanding block, not just the paper on its own).

Where glue is required during assembly a good quality wood glue (PVA) should be used. When wiping the excess away wherever possible wipe it towards the burnt edge as this marks less.

Dry fitting components prior to gluing is highly recommended, i.e. compulsory! You should also use an engineers' square during construction to ensure that everything goes together absolutely square.

# Construction

## Shell

1. Before you start construction ensure that you know the top and bottom of the side pieces. The middle shelf is slightly above the half way point. The first photo shows the left and right sides back to back. The second is a close up of the left hand side showing the slots for the middle shelf towards the top of the rear central tab.

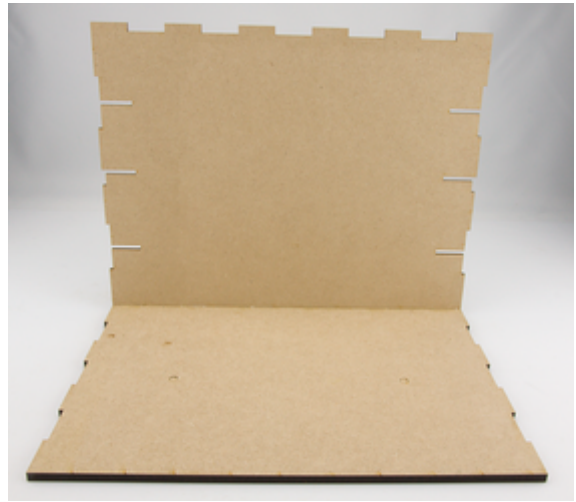


2. Position the 3mm magnets into the side panels and the 6mm magnets into the top and base. Remember the polarity of the magnets.

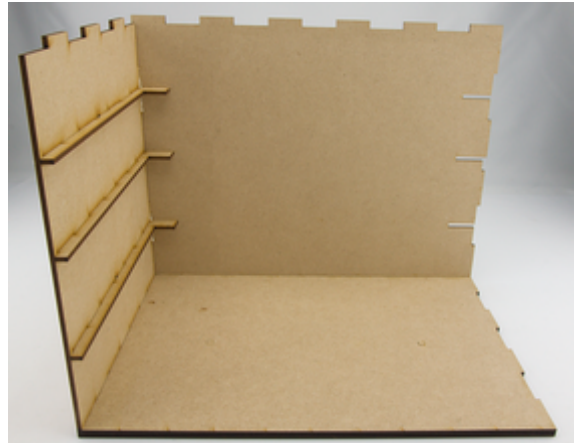
3. Glue the support shelves ensuring that they are at right angles to the sides and that the excess glue is removed. Failure to do the latter may mean that the drawers don't run smoothly.



4. Glue the rear onto the base.



5. Glue the left hand side on. With the sides it is often easier to slide the shelves into the rear and then align with the base.



6. Glue the right side on.



7. Glue the top on.  
The shell is complete and ready for the drawers.



## Drawers

1. Place the bottle supports and dividers onto the base. These do not need to be glued and the curved supports are in two thickness. From the front of the drawer as shown in the photo the supports are – plain, thin, thick, plain, thin, thick, plain.

To identify the front of the base, the gap between the plain and curved pieces is slightly smaller at the front.



2. Glue the two sides on. Don't forget to dry run, it makes it much easier. Also remember to remove excess glue to ensure smooth running of the drawers.



3. Glue the rear on.



4. Glue the front on. Make sure that this is glued on well as you'll be pulling the weight of all the paints with this.



5. All being well the drawer is complete and looks like this.

